



**TRANE®**



# Trane® Enercept Flex & E50 Series

Fully Featured. Flexible.  
Scalable. Simple.

MEASUREMENT CAPABILITY — FULL DATA SET

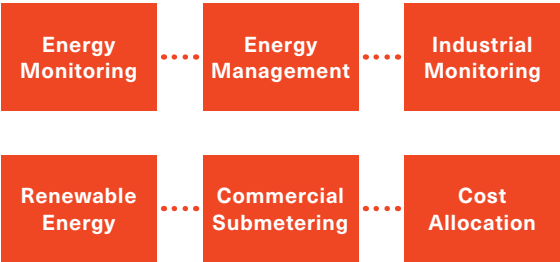
|  |
|--|
| Bi-directional energy measurements   |
| Power (3-phase total and per phase):<br>real (kW) reactive (kVAR), and apparent (kVA)                |
| Present power demand:<br>real (kW), reactive (kVAR), and apparent (kVA)                              |
| Import and export totals of present power demand:<br>real (kW), reactive (kVAR), and apparent (kVA)* |
| Peak power demand:<br>real (kW), reactive (kVAR), and apparent (kVA)                                 |
| Current: (3-phase average and per phase)   |
| Voltage: line-line and line-neutral<br>(3-phase total and per phase)                                 |
| Frequency  |
| Ansi 12-20.0.2% Accuracy, IEC 62053-22 Class 0.25  |
| Accumulated net energy:<br>real (kW), reactive (kVAR), and apparent (kVA)                            |
| Accumulated real energy by phase (kWh)   |
| Imported & export accumulators of real<br>& apparent energy*   |
| Reactive energy accumulators by quadrant<br>(3-phase total and per phase)*                           |
| Demand interval configurations: fixed or rolling block   |
| Demand interval configuration: external sync to comms  |

OUTPUTS

Rs-485 serial (BACnet MS/TP protocol)

\* Enercept Flex Only

Applications



# Lowest Installation Cost

- Easy Installation
- Easy Configuration
- Easy Integration

|                                     | Enercept Flex                        | E50 Series BACnet   |
|-------------------------------------|--------------------------------------|---|
| <b>Serial Communication</b>         | 2-wire Autodetect (BACnet)           | 2-wire BACnet MS/TP   |
| <b>CT Compatibility</b>             | Solid-core, Split-core<br>Rope style | E50H2-T2<br>Solid/Split-core Model<br><br>E50H2A-T2<br>Rope-style model |
| <b>Uni/Bi-directional</b>           | Both                                 | Uni-directional   |
| <b>Backlit LCD Display</b>          | No                                   | Yes   |
| <b>Full Data Set</b>                | Yes                                  | Yes   |
| <b>Optimized Tracer Integration</b> | Yes                                  | Yes   |
| <b>Accuracy</b>                     | 0.2%                                 | 0.2%  |
| <b>Voltage Range</b>                | 90-480 VAC                           | 90-600 VAC  |



## Maximum Flexibility

- Compact size with easy in-panel mounting/installation options
- Simple integration with a variety of CT form factors
  - split-core, solid-core, Rogowski, and compatibility from 5 to 5000A
- BACnet protocols along with Uni-directional and Bi-directional feature sets
- Simple set-up and verification
- Seamless integration with Trane and non-Trane building automation systems

## Accessories



E681



E681



H681x



E683

Phase Status:

Visual indication of  
meter performance

Versatile Mounting:

DIN or Screw Mount

Meter Status:

Quick troubleshooting

CT Amperage Rotary:

Needed flexibility with CT  
support from 50 to 500A

Rotary Dial Setup:

Configure with or without  
power, saving both time and  
labor costs

Essential Protocol Support:  
BACnet and Uni-directional  
and Bi-directional measurement



BACnet

communication

Easy Din Rail or

Screw Mounting

Back Light

LCD Display

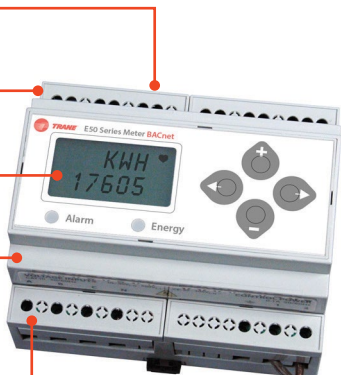
User Enabled

Password

Protection

Visual Alarm

Notification



Learn more at [trane.com](https://trane.com)



Trane – by Trane Technologies (NYSE: TT), a global climate innovator – creates comfortable, energy efficient indoor environments through a broad portfolio of heating, ventilating and air conditioning systems and controls, services, parts and supply. For more information, please visit *trane.com* or *tranetechnologies.com*.

All trademarks referenced in this document are the trademarks of their respective owners.

© 2025 Trane. All Rights Reserved.

BAS-SLB121-EN  
08/08/2025