



Product Catalog

# **Classroom Ventilator Accessories from A to Z**

Wall Boxes, Shelving, and Gravity  
Relief Damper



# Introduction

## Unit Ventilator Accessories from A to Z

As a leader in applied unit ventilator systems, Trane brings more than just an authentic approach for HVAC design to the drawing table. Trane also provides aesthetically pleasing solutions through their matching classroom accessories. Trane accessories are intended to complement the unit ventilator in order to provide a complete classroom system to the administrative staff.

Our full line of add-on accessories enhance the classroom unit ventilator system by affording a seamless approach to a classroom layout.

Trane's accessories include:

- Shelving
- Wall boxes
- Pipe covers
- Gravity relief damper (exhaust stale air naturally from the classroom)

Trane has over 80 years of application and design experience with indoor comfort system. Our offices are staffed with HVAC engineering professionals ready to work with you and your system designer to help determine the best solution for your school.

## **Copyright**

This document and the information in it are the property of Trane, and may not be used or reproduced in whole or in part without written permission. Trane reserves the right to revise this publication at any time, and to make changes to its content without obligation to notify any person of such revision or change.

## **Trademarks**

All trademarks referenced in this document are the trademarks of their respective owners.

## **Revision History**

- Added chapter Classroom Ventilator Pipe Cabinet – R-32 Installation with a Vertical Unit Vent.
- Updated the Dimensional Data chapter.
- SGRL and AGRL options removed in Model Number Descriptions chapter.



# Table of Contents

- Features and Benefits ..... 5
  - Shelving ..... 5
  - Wall Boxes and Gravity Damper ..... 7
- Model Number Descriptions ..... 9
  - Shelving ..... 9
  - Gravity Damper..... 10
- Dimensional Data ..... 11
  - Wall Box for ERS ..... 11
  - Gravity Relief Damper ..... 12
  - Shelving – Open or Closed ..... 13
  - Shelving with Dynamic Barrier ..... 14
  - Shelving Cut-to-Fit Filter ..... 15
  - Pipe Cover..... 15
  - 12-inch Pipe Cabinet Dimensions ..... 16
  - 12-inch Pipe Cabinet Stitch Weld..... 17
  - Wall Box Horizontal Louver..... 18
  - Wall Box Vertical Louver (V1 and V3) ..... 19
  - Wall Box Vertical Louver (V2 and V6) ..... 20
- Mechanical Specifications ..... 21
  - Shelving and Accessories..... 21
  - Wall Boxes..... 21
  - Gravity Relief Dampers ..... 21
- Pipe Cabinet – R-32 Installation with a Vertical Unit Vent ..... 22



# Features and Benefits

## Shelving

### Unit Ventilator Shelving

Trane's unit ventilator shelving was inspired by the needs of a classroom setting. The design supports applications from simple book or file storage to a draft barrier design. Piping compartments, a choice in tops and cut-to-fit fillers creates a custom approach to the space design. Trane's shelving is easy to install, and durable enough to withstand even the most rigorous classroom environment.

### Cabinet Finish

The unit cabinetry is made of a durable industrial grade metal to withstand typical student wear/tear. An appliance grade paint treatment increases the aesthetics of the equipment while making it long-lasting.

All selections are equipped with leveling legs for proper matching to the classroom unit ventilator, energy recovery system or side wall exhaust system.

For units that include a dynamic (draft) barrier design, a floor spacer will be installed at the back of the shelving unit in order to block air flow under the unit.

Each shelving component ships from the factory with a standard set of installation hardware to help minimize the need for field supplied components.

The Formica® top option is available as a 1-inch particle board, finished with a choice of Formica laminate to compliment and coordinate with paint color of the shelving unit. The laminate is available in sections or continuous lengths for a seamless appearance. A flanged drop-in grille eliminates exposed edges, and is permanently fastened to prevent removal. The top may be ordered with or without a grille.

An attractive metal top, painted in the same color as the shelving unit, is a low cost option to flatter the classroom space.

**Figure 1. Unit ventilator shelving configurations**



## Unit ventilator shelving configurations

### Closed Shelving

The closed shelving design is available in 2, 3, 4 and 5-foot lengths. Shelving depth includes 16 5/8-inch or 21 1/4-inch to accommodate retrofit and new equipment installations. The units are equipped with adjustable shelves that are reinforced with a formed channel for maximum strength. Closed shelving doors include two locks as standard. A bottom door guide adds stiffness and durability for the sliding doors.



## Features and Benefits

---

**Figure 2. Closed shelving**



### Open Shelving

The open shelving design is available in 2, 3, 4 and 5-foot lengths. Shelving depth includes 16 5/8-inch or 21 1/4-inch to accommodate retrofit and new equipment installations. The units are equipped with adjustable shelves that are reinforced with a formed channel for maximum strength.

**Figure 3. Open shelving**



### Cut-to-fit Filler

The cut-to-fit filler piece is designed to fill the gaps between small spaces. The filler is available in an 18-inch or 36-inch length, and may be cut-to-fit an area as small as 4-inches. The fill-in section has a removable front panel to allow access to piping or electrical connections.

**Figure 4. Cut-to-fit filler**



### Piping Compartment

The piping compartment is equipped with a metal top, leveling legs and a locking front panel. It is a standalone piece of equipment that is best suited for housing piping equipment for the unit ventilator. The compartment is designed to be attached to either end of the unit ventilator.

The piping compartment is required for R-32 orders with vertical unit vents.

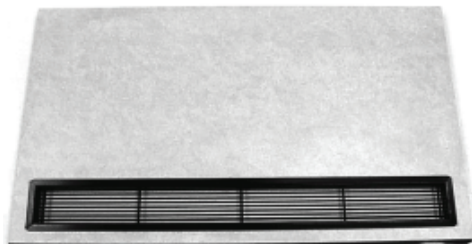
**Figure 5. Piping compartment**



### **Formica Laminate Top**

The laminate top selection is available in many decorative colors, and in lengths up to 12 feet. The tops may be cut in the field to match any specific length requested. A Gator Ply™ underside seals out moisture that could potentially cause warping. It is available with or without a grille.

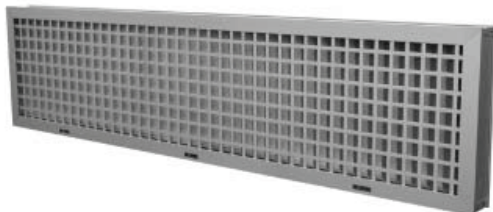
**Figure 6. Formica laminate top**



## **Wall Boxes and Gravity Damper**

### **Wall Boxes**

**Figure 7. Wall boxes**



Wall boxes are to be installed prior to mounting the Classroom Unit Ventilator, Side Wall Exhaust, or Energy Recovery Unit Ventilator. Its intended use is to help deter animals, trash, or rainfall from entering into the mechanical system providing a year-round outdoor intake for the HVAC equipment.



## Features and Benefits

---

### Finish

Trane's wall boxes are constructed of heavy gauge aluminum and designed to last the life of the building. Internal parts are interlocked, in addition to being held securely in place by the frame-within-a-frame design. This assures proper louver alignment. Louvers are vertically or horizontally aligned, and held in position by an integral spacing guide. The boxes are available with an anodized aluminum finish, or a baked enamel finish. Wall box arrangements are furnished with a diamond pattern, expanded aluminum bird screen to eliminate objects from blowing into the building. The grilles are aluminum and the same finish as the frame.

### Wall Box Types

Trane offers a variety of wall boxes to support different needs and applications. Each are sized to match the classroom unit ventilator intake, and may be ordered with or without a recessing flange. See "[Dimensional Data](#)," p. 11 for free area velocity of each wall box design.

### Gravity Relief Damper

Figure 8. Gravity damper



The gravity relief damper is a barometrically operated design which prevents over pressurization of the classroom. The damper is typically located in a plenum, or behind the 21 1/4-inch classroom shelving with a grilled top. An optional wall box is recommended to deter objects from easy entry into the building. Finish

Finish Trane's gravity relief damper is constructed from high grade aluminum and is designed for durability and long-stay. The dampers are horizontally arranged into the assembly.

### Pipe Cover

The pipe cover assembly consists of the pipe enclosure, mounting strip and pipe hangers. It adds a decorative touch to the room decor by removing the supply/return/condensate pipe exposure.

The enclosure is constructed from heavy gauge metal and finished to match the classroom unit ventilator. The steel cover is locked to the mounting strip with non-visible fasteners. The mounting strip is a continuous roll formed steel and contains a full length channel for the enclosure. The pipe hangers are 0.148-inch in diameter, zinc plated steel wire. The hangers are designed to support up to two, 2 1/8-inch. O.D. insulated pipes.



# Model Number Descriptions

## Shelving

### Digit 1, 2, 3 — Unit Configuration

**SHL** = Classroom Shelving

### Digit 4 — Development Sequence

**B** = Current Sequence

### Digit 5 — Shelving Style

**0** = Continuous Top ONLY/No Shelving

**1** = 18-inch Cut-to-Fit Filler

**3** = 36-inch Cut-to-Fit Filler

**4** = 12-inch Piping Compartment\*

**5** = 18-inch Piping Compartment\*

**A** = 2-ft Open Shelving

**B** = 3-ft Open Shelving

**C** = 4-ft Open Shelving

**D** = 5-ft Open Shelving

**E** = 3-ft Closed Shelving

**F** = 4-ft Closed Shelving

**G** = 5-ft Closed Shelving

**H** = 3-ft Open Shelving with Dynamic Air Barrier

**J** = 4-ft Open Shelving with Dynamic Air Barrier

**K** = 5-ft Open Shelving with Dynamic Air Barrier

**L** = 3-ft Closed Shelving with Dynamic Air Barrier

**M** = 4-ft Closed Shelving with Dynamic Air Barrier

**N** = 5-ft Closed Shelving with Dynamic Air Barrier

### Digit 6 — Shelving Top Depth/Grille

**0** = Not Required

**1** = 16 5/8-inch Shelving and Top Depth

**2** = 21 1/4-inch Top Depth without Grille

**3** = 21 1/4-inch Top Depth with Steel Grille

**4** = 21 1/4-inch Top Depth with Aluminum Grille and Damper

**5** = 21 1/4-inch Top Depth with Aluminum Grille

**6** = 16 5/8-inch Deep Piping Compartment

**7** = 21 1/4-inch Deep Piping Compartment

### Digit 7, 8 — Length of Formica Top

**00** = No Formica Top for Shelving Selected

**01** = Formica Top w/Same Size and Shelving

**02** = 2-ft Top Only (no shelving)

**03** = 3-ft Top Only (no shelving)

**04** = 4-ft Top Only (no shelving)

**05** = 5-ft Top Only (no shelving)

**06** = 6-ft Continuous Top

**07** = 7-ft Continuous Top

**08** = 8-ft Continuous Top

**09** = 9-ft Continuous Top

**10** = 10-ft Continuous Top

**11** = 11-ft Continuous Top

**12** = 12-ft Continuous Top

**18** = 18-inch Top Only (no shelving)

### Digit 9, 10 — Design Sequence

**00** = Current Sequence

### Digit 11 — Decorator Formica Tops

**0** = No Top

**1** = Metal Top

**A** = Champagne Papyrus Formica® Top

**E** = Almond Formica Top

**F** = Ivory Blushing Formica Top

**G** = Natural Canvas Formica Top

**H** = Glacier Slate Formica Top

**J** = Birch Formica Top

**K** = Folkstone Formica Top

**M** = Fog Formica Top

**N** = Tundra Terra Formica Top

**Q** = Stone Dust Formica Top

### Digit 12 — Shelving Paint Color

**0** = No Color Shelving Finish

**A** = Cameo White Shelving Finish

**B** = Soft Dove Shelving Finish

**C** = Deluxe Beige Shelving Finish

**D** = Driftwood Grey Shelving Finish

**E** = Rose Mauve Shelving Finish

**F** = Stone Grey Shelving Finish

**G** = Bronze Tone Shelving Finish

### Digit 13 — End Covers

**0** = No End Covers

**A** = 16 5/8-inch Deep End Covers w/o Cutouts

**B** = 16 5/8-inch Deep End Covers w/Std. Cutouts

**C** = 16 5/8-inch Deep End Covers w/ Extended Cutouts

**D** = 21 1/4-inch Deep End Covers w/o Cutouts

**E** = 21 1/4-inch Deep End Covers w/Std. Cutout

**F** = 21 1/4-inch Deep End Covers w/ Extended Cutouts

**G** = 21 1/4-inch Deep End Covers w/ Extended Cutouts

### Digit 14 — Subbase

**0** = No Subbase Feature

**2** = 2-inch Subbase

**4** = 4-inch Subbase

**6** = 6-inch Subbase

### Digit 15 — Kickplate

**0** = Louver Front Kickplate (no side)

**1** = Louver Front and Side Kickplate

**2** = Solid Front Kickplate (no side)

**3** = Solid Front and Side Kickplate

### Digit 16 — Key Lock

**0** = Standard Lock

**1** = Principal Key for Lock

\*Required for R-32 orders with vertical unit vents.



## Model Number Descriptions

---

### Gravity Damper

#### Digit 1, 2, 3 — Unit Configuration

**SWG** = Gravity Relief Damper

#### Digit 4 — Development Sequence

**A** = Current Sequence

#### Digit 5, 6, 7 — Unit Size

**CAB** = Cabinet Only

**050** = 500 CFM

**075** = 750 CFM

**100** = 1000 CFM

**125** = 1250 CFM

**150** = 1500 CFM

**200** = 2000 CFM

#### Digit 8 — Unit Voltage/Phase

**0** = Not Required for SWG or CAB

#### Digit 9 — Agency Listing

**0** = No Listing

**2** = ETL Agency Listed

#### Digit 10,11 — Design Sequence

**E0** = Current Sequence

#### Digit 12,13 — Wall Boxes

**00** = Wall Box Not Required

**V1** = Wall Box w/ Vertical Louvers

**V2** = Wall Box w/ Vertical Louvers and Flush Lattice

**V3** = Wall Box w/ Vertical Louvers and Side Flange

**V6** = Wall Box w/ Vertical Louvers, Flange and Lattice

**H1** = Wall Box w/ Horizontal Louvers

**H2** = Wall Box w/ Horizontal Louvers

#### Digit 14,15 — Wall Box Finish

**00** = No Wall Box

**CA** = Clear Anodized

**LB** = Light Bronze

**MB** = Medium Bronze

**DB** = Dark Bronze

**B1** = Brick, Option 1

**B3** = Brick, Option 2

**B5** = Brick, Option 5

**WH** = White

**BL** = Black

#### Digit 16 — Unit Depth

**0** = SWG

#### Digit 17 — Front Panel

**0** = SWG

#### Digit 18 — End Cover

**0** = No End Cover

#### Digit 19 — Color Selection

**0** = SWG

#### Digit 20 — Subbase Selection

**0** = No Unit Subbase

#### Digit 21 — Controls

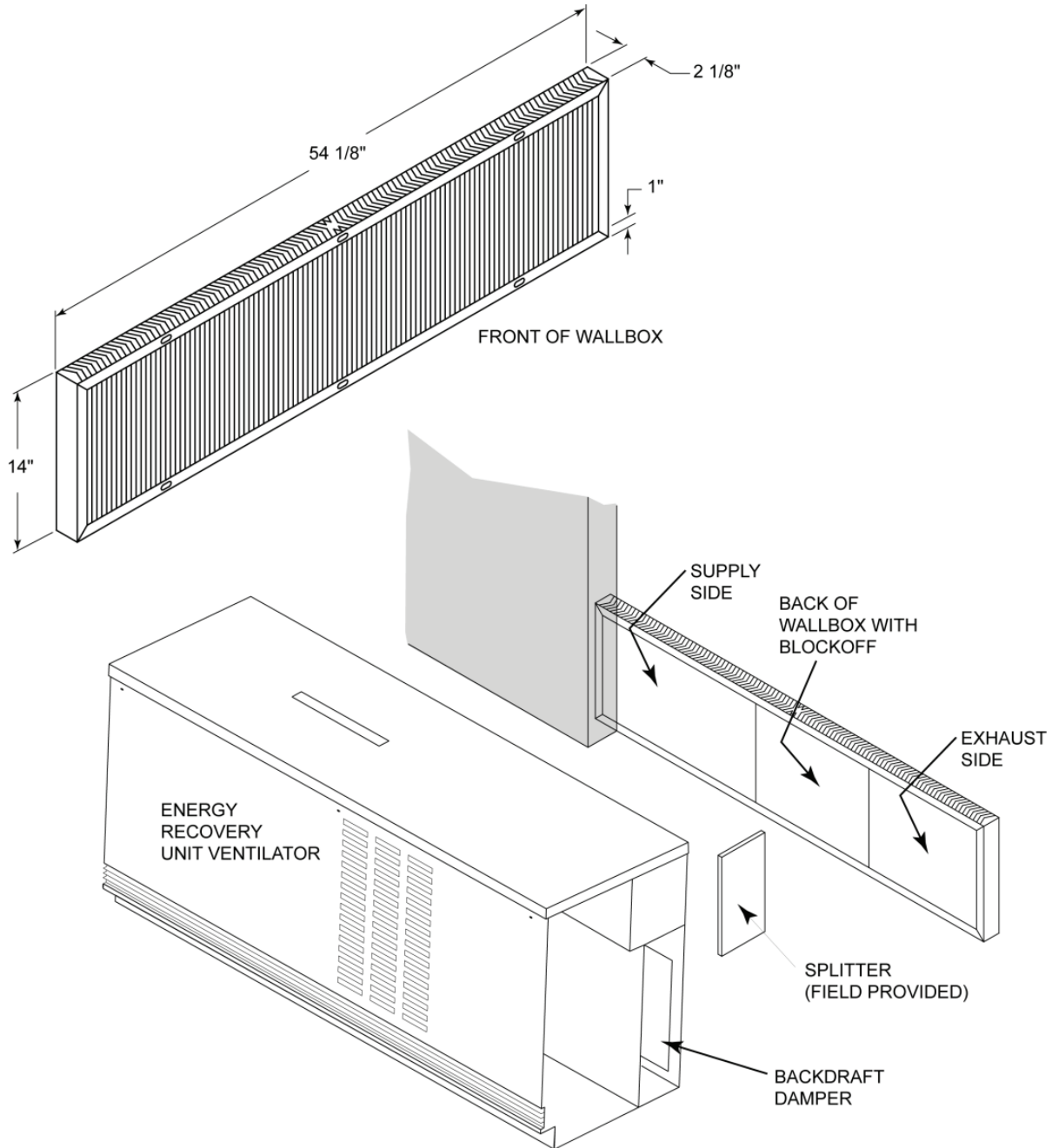
**0** = SWG or CAB



# Dimensional Data

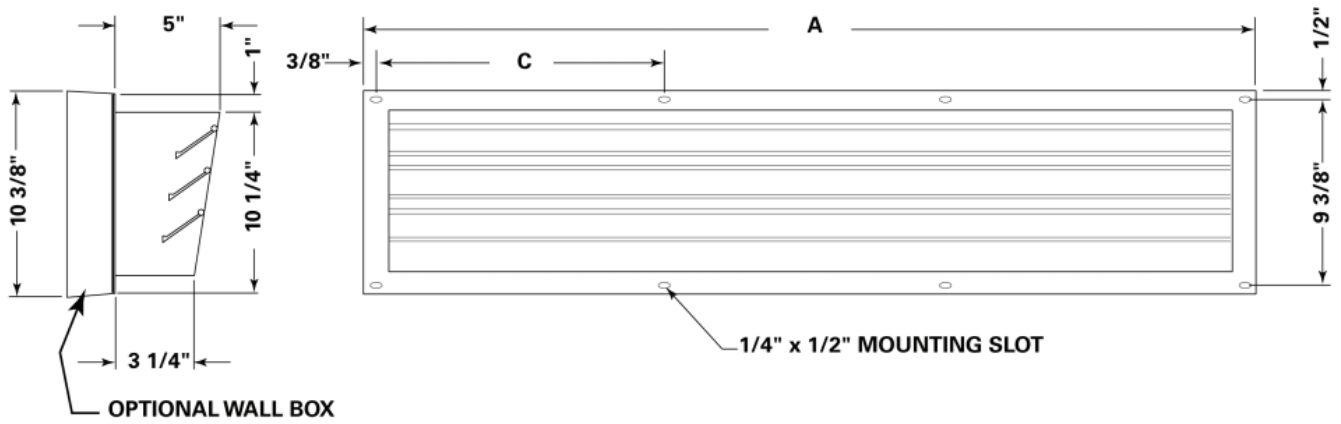
## Wall Box for ERS

Figure 9. Wallbox



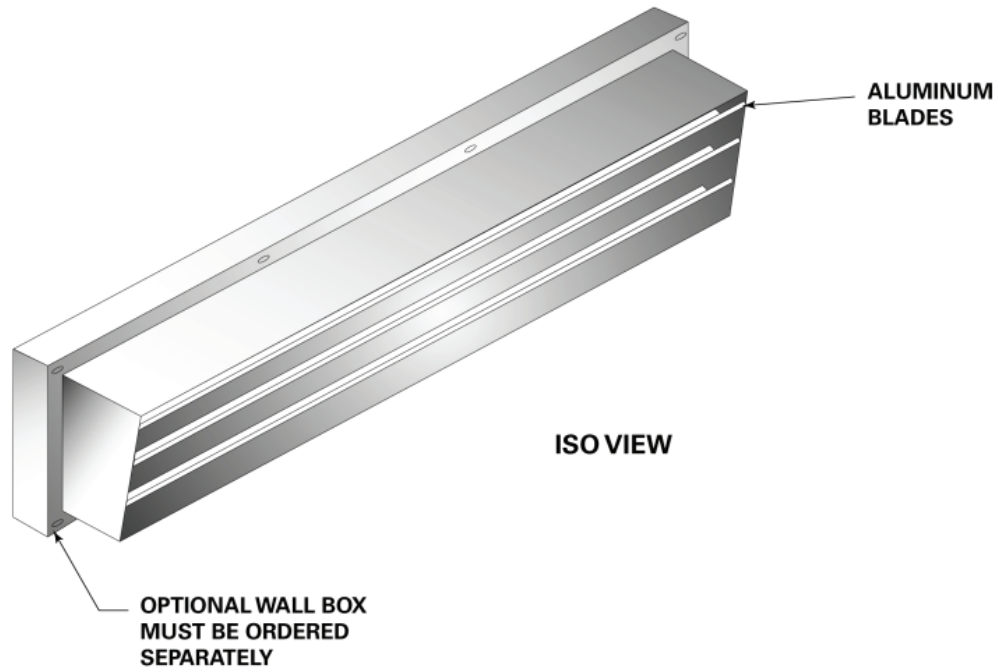
# Gravity Relief Damper

Figure 10. Gravity relief damper



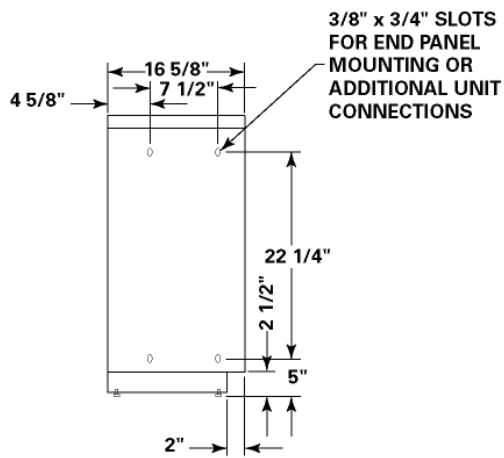
SIDE VIEW

FRONT VIEW

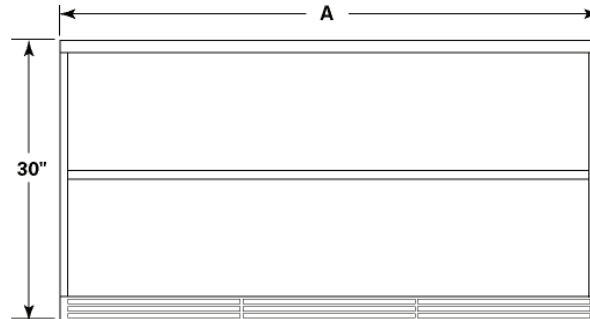


# Shelving – Open or Closed

Figure 11. Shelving

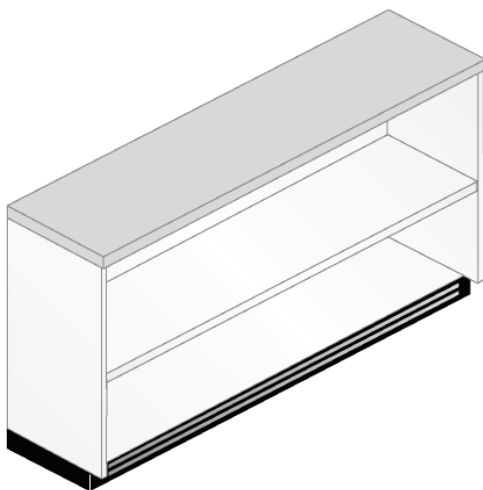


SIDE VIEW



FRONT VIEW

NOTE: ADD 5/8" TO THE LENGTH FOR EACH END PANEL.



OPEN SHELVING



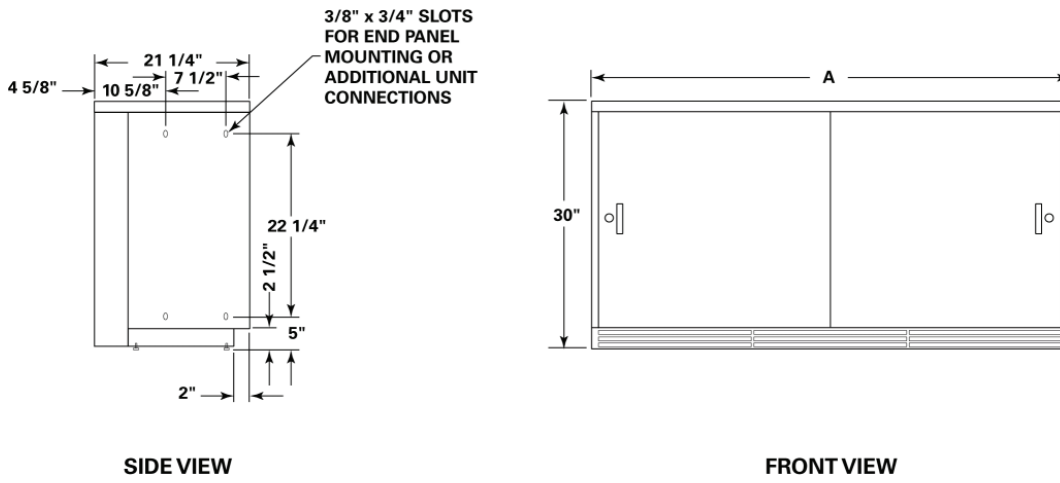
CLOSED SHELVING



## Dimensional Data

# Shelving with Dynamic Barrier

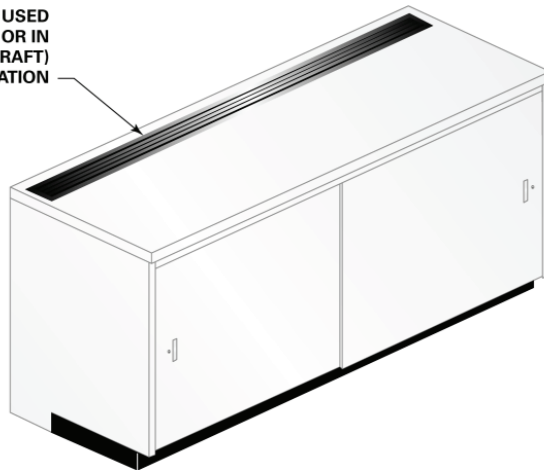
Figure 12. Shelving with dynamic barrier



**NOTE:**

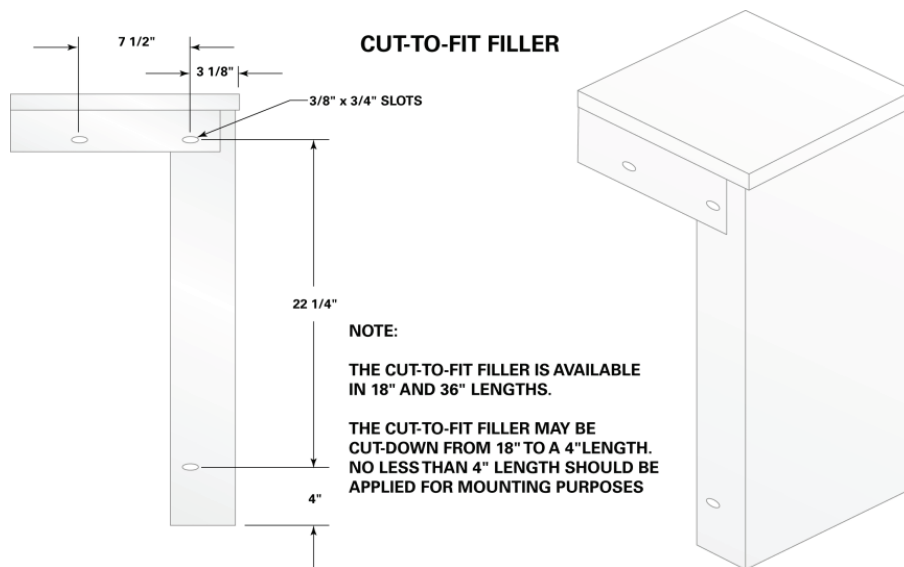
A MANUAL DAMPER IS AVAILABLE WHEN ORDERING SHELIVING WITH A GRILLE.

THE OPTIONAL GRILLE IS USED WITH WALL FIN OR IN A DYNAMIC AIR (DRAFT) BARRIER APPLICATION



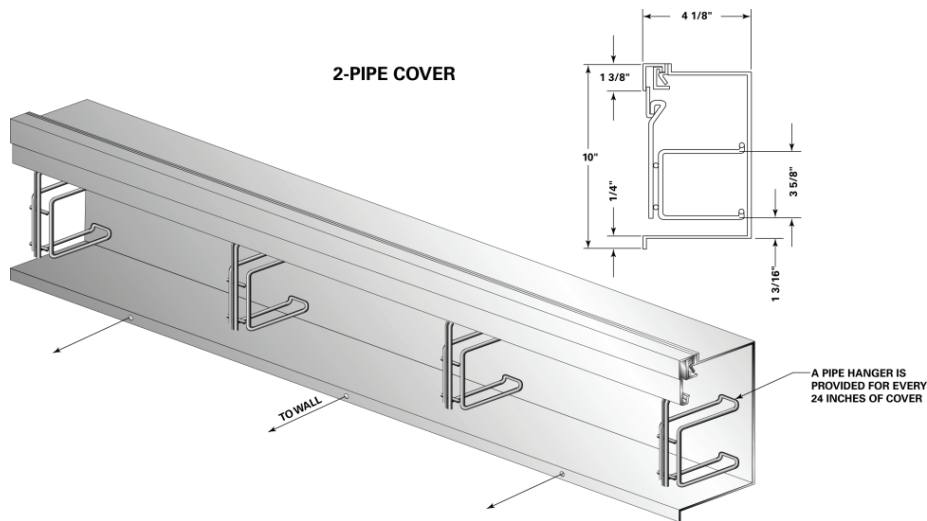
## Shelving Cut-to-Fit Filter

Figure 13. Shelving cut-to-fit filter



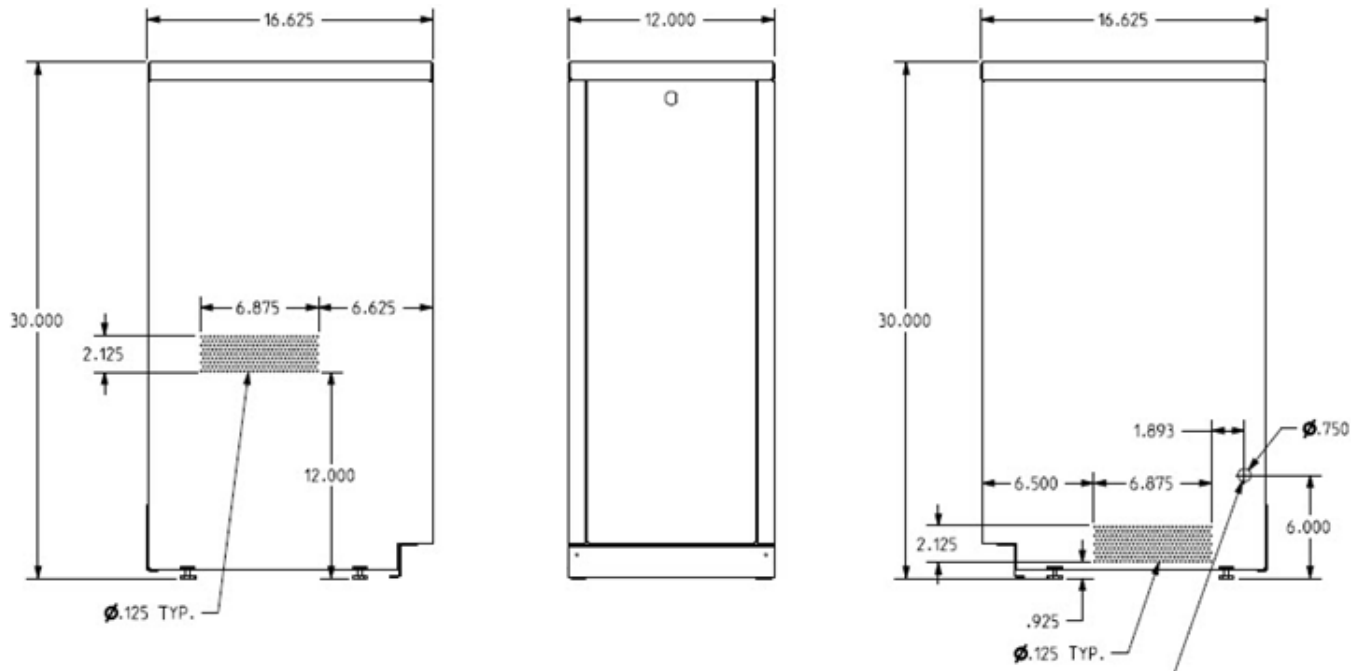
## Pipe Cover

Figure 14. Pipe cover



# 12-inch Pipe Cabinet Dimensions

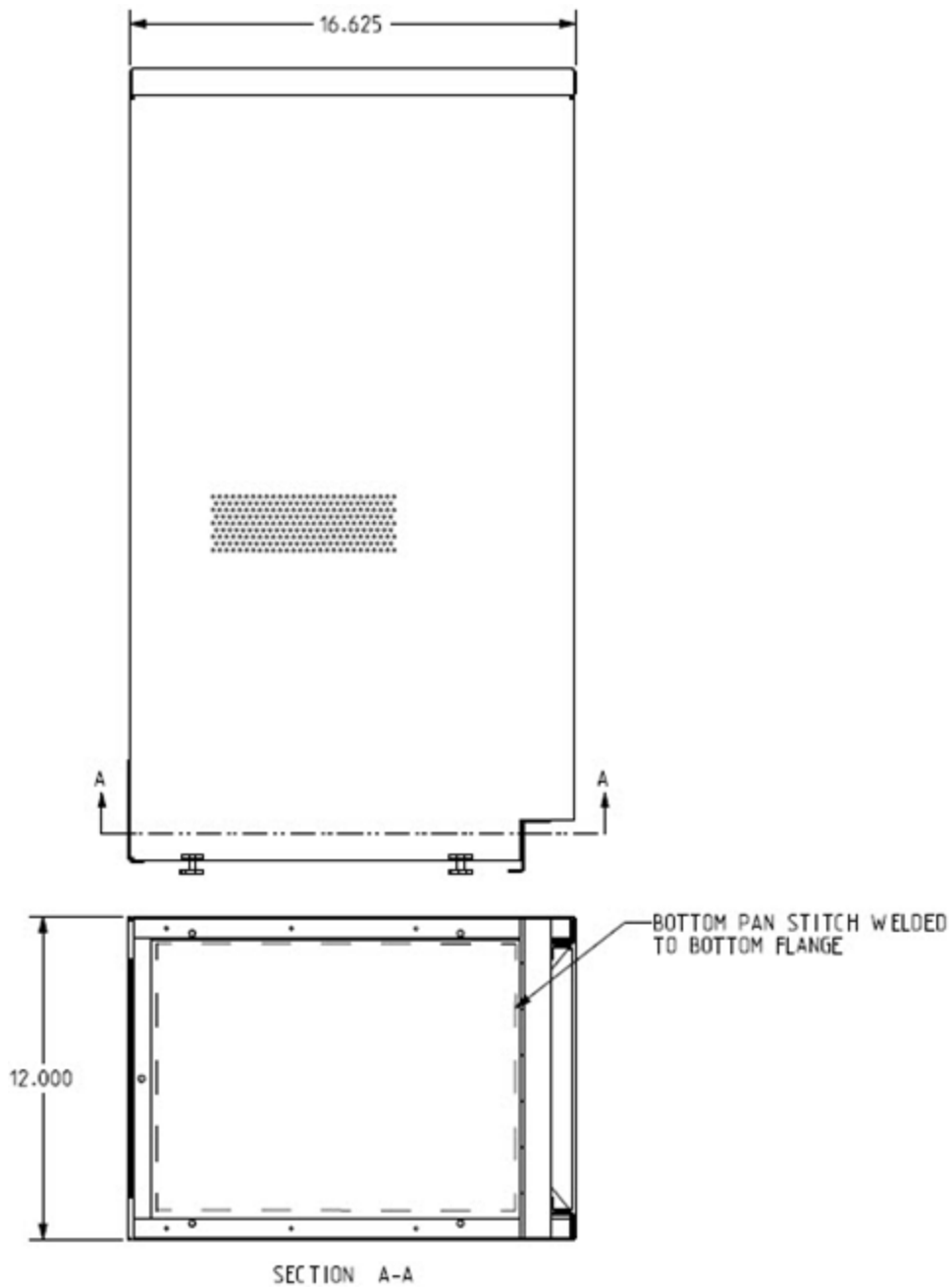
Figure 15. 12-inch pipe cabinet dimensions



0.750 HOLE PLUG AND GROMMET SHIPPED WITH UNIT LOOSE FOR FIELD INSTALL  
 LOCKING GROMMET MCMASTER CARR P/N 5269T771  
 LOCKING PANEL PLUG MCMASTER CARR P/N 85985K21

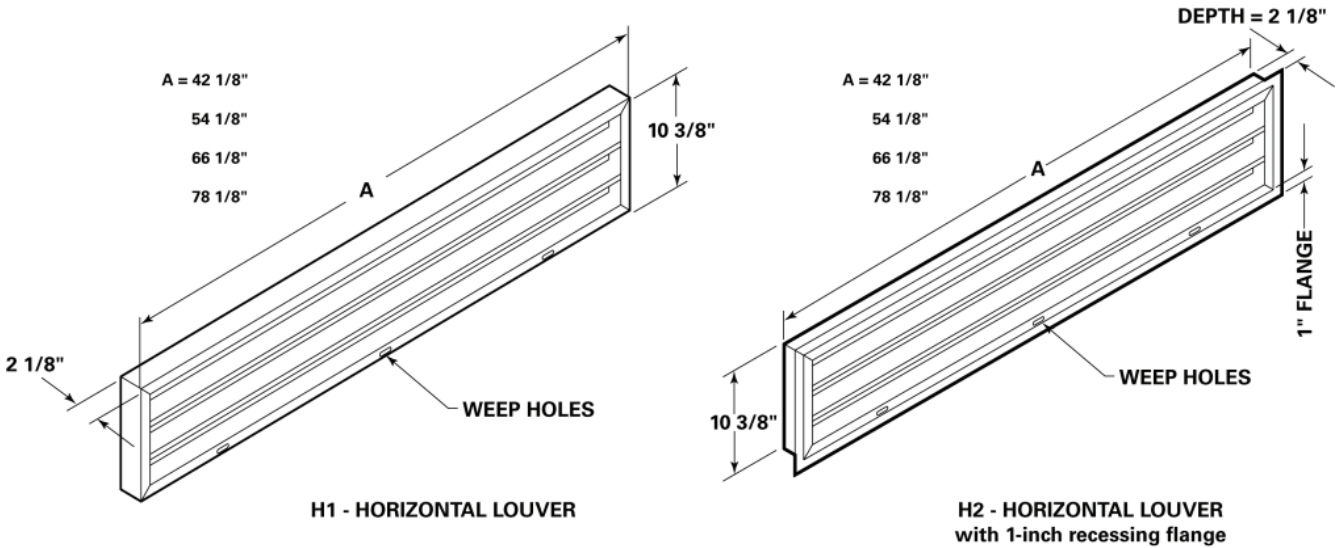
## 12-inch Pipe Cabinet Stitch Weld

Figure 16. 12-inch pipe cabinet stitch weld dimensions



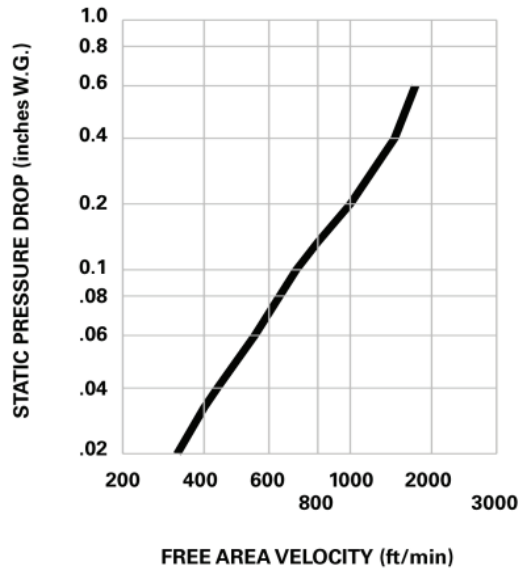
# Wall Box Horizontal Louver

Figure 17. Wall box horizontal louver



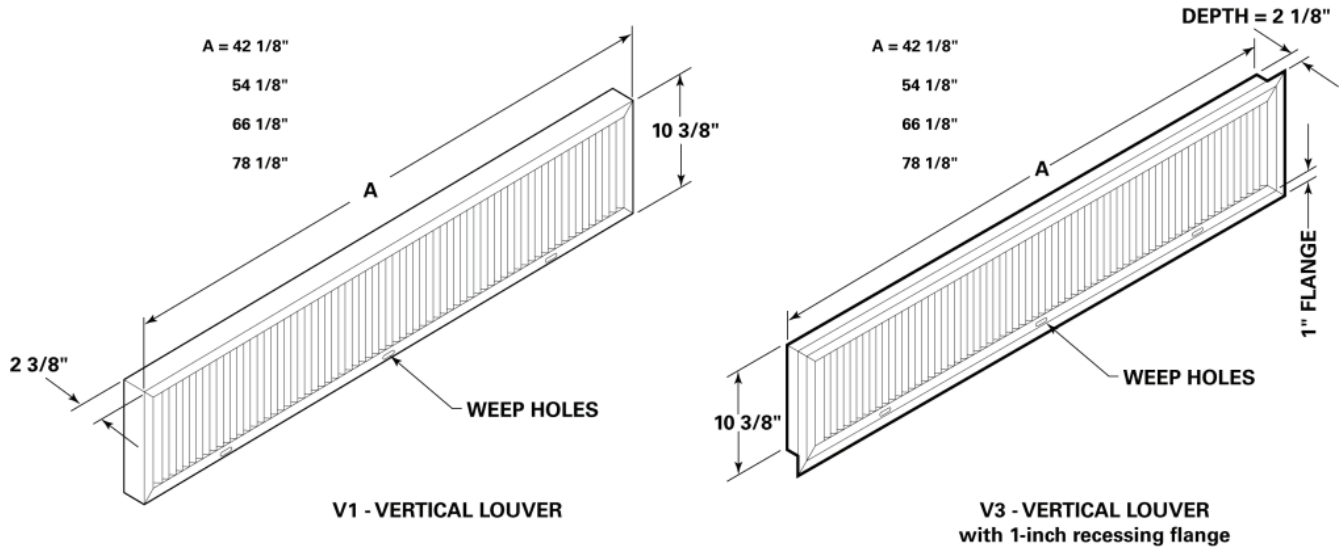
Unit Size	A	Square Feet of Free Area
075	42 1/8"	.81
100	54 1/8"	1.10
125	66 1/8"	1.39
150/200	78 1/8"	1.69

**NOTE:**  
 THE DIMENSIONS LISTED ABOVE ARE ACTUAL (NOT NOMINAL) DIMENSIONS.  
 THE HORIZONTAL BLADES OF THE H1 AND H2 WALL BOXES ARE SPACED 2" APART.



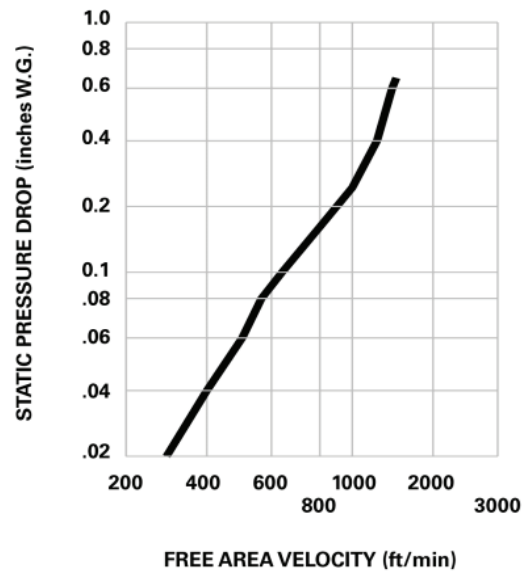
# Wall Box Vertical Louver (V1 and V3)

Figure 18. Wall box vertical louver



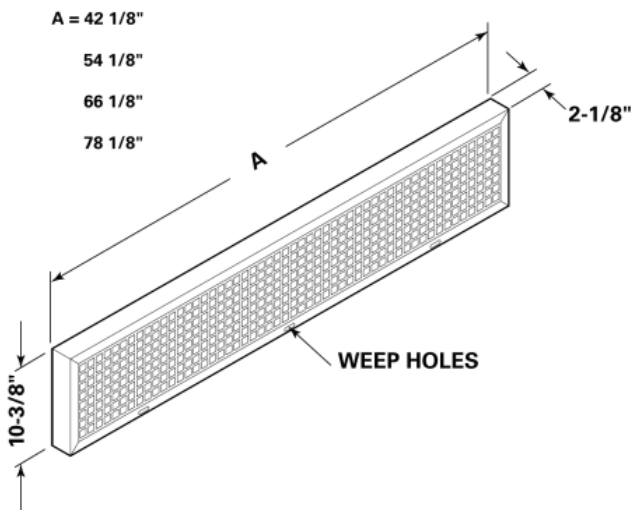
Unit Size	A	Square Feet of Free Area
075	42 1/8"	1.39
100	54 1/8"	1.88
125	66 1/8"	2.37
150/200	78 1/8"	2.87

**NOTE:**  
 THE DIMENSIONS LISTED ABOVE ARE ACTUAL (NOT NOMINAL) DIMENSIONS.  
 THE VERTICAL BLADES OF THE V1 AND V3 WALL BOXES ARE SPACED 3/8" APART.

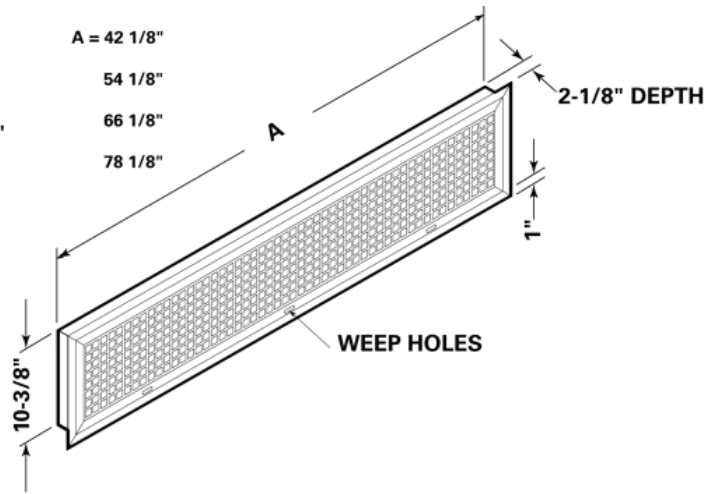


# Wall Box Vertical Louver (V2 and V6)

Figure 19. Wall box vertical louver



V2 - VERTICAL LOUVER with Lattice



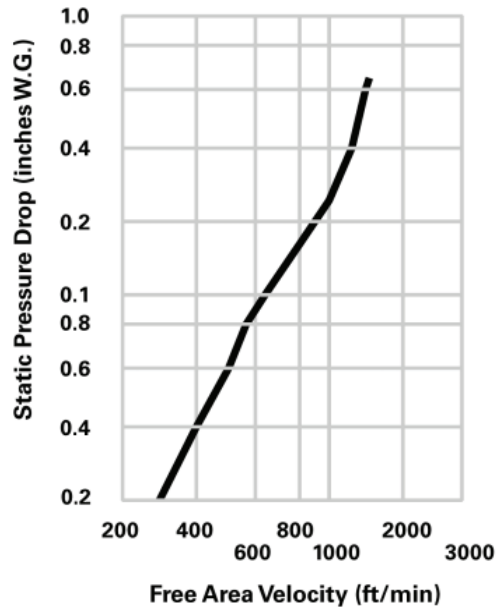
V6 - VERTICAL LOUVER with Lattice and 1-inch recessing flange

Unit Size	A	Square Feet of Free Area
075	42 1/8"	1.035
100	54 1/8"	1.345
125	66 1/8"	1.681
150/200	78 1/8"	1.992

**NOTE:**

THE DIMENSIONS LISTED ABOVE ARE ACTUAL (NOT NOMINAL) DIMENSIONS.

THE VERTICAL BLADES OF THE V2 AND V6 WALL BOXES ARE SPACED 3/8" APART.





# Mechanical Specifications

## Shelving and Accessories

Unit ventilator shelving is manufactured from durable cabinet steel and painted in decorator colors as specified by the architect/engineer. The shelving cabinet is equipped with adjustable shelves, reinforced with a formed channel for maximum strength. Closed shelving doors are equipped with a locking device.

The unit ventilator shelving is available with a decorative and protective Formica™ top to compliment the unit cabinetry.

Shelving options include:

- Matching grilles
- Dynamic (draft) barrier shelving
- Cut-to-fit-filler
- Piping compartment
- Open/closed shelving

Shelving units contain leveling legs and hardware required to mate the shelving with the classroom unit ventilator or energy recover ventilator.

## Wall Boxes

Trane wall boxes provide year-around moisture (droplet) free, outdoor air intake directly to the unit ventilator through the exterior classroom wall. Wall boxes are available in six standard arrangements to meet installation requirements on virtually any type of building construction.

All Trane wall boxes are constructed of extremely heavy gauge material and designed to last the life of the building. Internal parts are interlocked in addition to being held securely in place by the frame-within-a-frame design. This assures proper louver alignment. In addition, the strength of the vertical louver design simplifies installation by eliminating the need for a lintel. Wall boxes contain a 1/2-inch square mesh galvanized screen on the inside of the louver.

## Gravity Relief Dampers

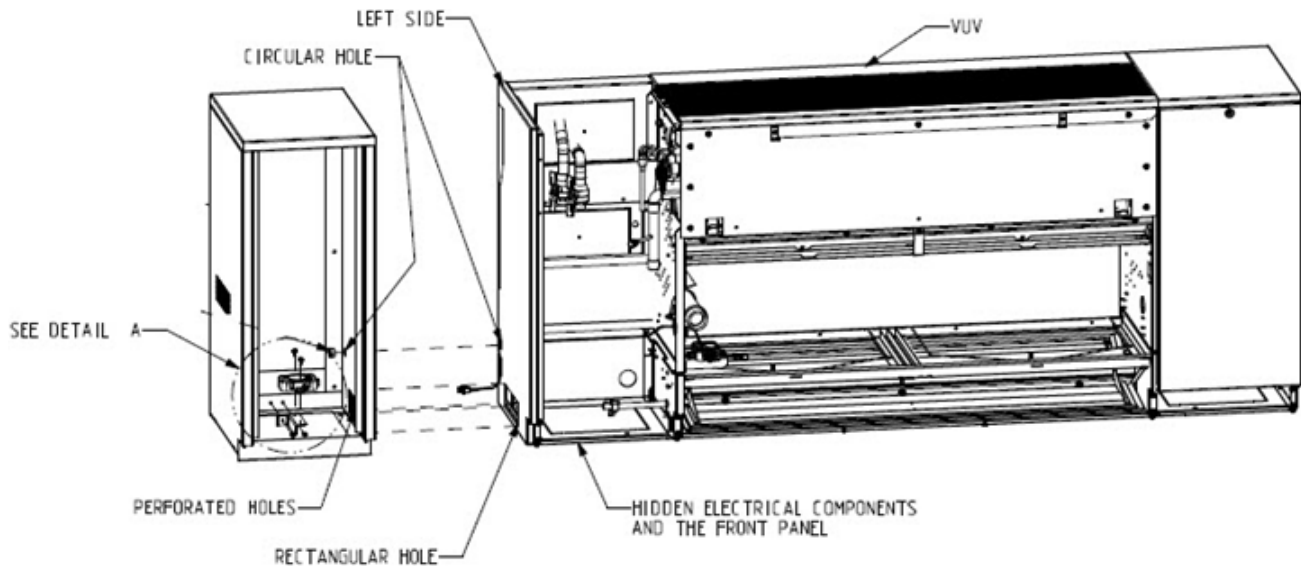
The gravity relief dampers are a barometrically operated, aluminum bladed design. The gravity relief damper is provided with optional wall boxes.

# Pipe Cabinet – R-32 Installation with a Vertical Unit Vent

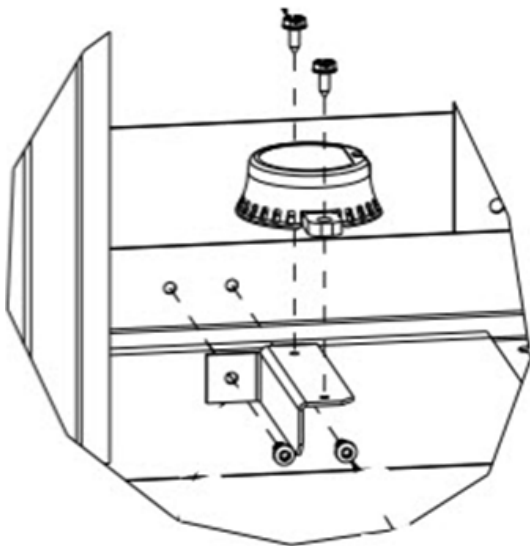
With any R-32 vertical unit vent order, a pipe cabinet must be ordered. Refer to the *Vertical Unit Vent IOM* (UV-SVX006\*-EN) for installation instructions and the following figures for more information on installation.

**Note:** If the cabinet is used with any non-R32 orders related to vertical unit vents, **use the plug** to cover the 0.75-inch hole on the right side of the cabinet.

**Figure 20. VUV with pipe cabinet**



**Figure 21. Detail A**





Trane - by Trane Technologies (NYSE: TT), a global innovator - creates comfortable, energy efficient indoor environments for commercial and residential applications. For more information, please visit [trane.com](http://trane.com) or [tranetechnologies.com](http://tranetechnologies.com).

Trane has a policy of continuous product and product data improvements and reserves the right to change design and specifications without notice. We are committed to using environmentally conscious print practices.

UV-PRC005F-EN 01 May 2026  
Supersedes UV-PRC005E-EN (November 2024)

©2026 Trane