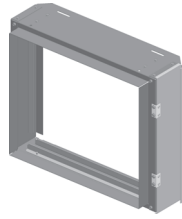




# Installation Instructions

## Ducted Filter Rack

### Water Source Heat Pumps



Model Numbers: GEH/V\* (0.5 to 5 tons), EXH/V\*, and DXH/V\*

#### **SAFETY WARNING**

Only qualified personnel should install and service the equipment. The installation, starting up, and servicing of heating, ventilating, and air-conditioning equipment can be hazardous and requires specific knowledge and training. Improperly installed, adjusted or altered equipment by an unqualified person could result in death or serious injury. When working on the equipment, observe all precautions in the literature and on the tags, stickers, and labels that are attached to the equipment.

August 2023

WSHP-SVN09D-EN

©2023 Trane



1

## Warnings, Cautions, and Notices

Read this manual thoroughly before operating or servicing this unit. Safety advisories appear throughout this manual as required. Your personal safety and the proper operation of this machine depend upon the strict observance of these precautions.

The three types of advisories are defined as follows:

#### **WARNING**

Indicates a potentially hazardous situation which, if not avoided, could result in death or serious injury.

#### **CAUTION**

Indicates a potentially hazardous situation which, if not avoided, could result in minor or moderate injury. It could also be used to alert against unsafe practices.

#### **NOTICE**

Indicates a situation that could result in equipment or property-damage only accidents.

### Important Environmental Concerns

Scientific research has shown that certain man-made chemicals can affect the earth's naturally occurring stratospheric ozone layer when released to the atmosphere. In particular, several of the identified chemicals that may affect the ozone layer are refrigerants that contain Chlorine, Fluorine and Carbon (CFCs) and those containing Hydrogen, Chlorine, Fluorine and Carbon (HCFCs). Not all refrigerants containing these compounds have the same potential impact to the environment. Trane advocates the responsible handling of all refrigerants.

### Important Responsible Refrigerant Practices

Trane believes that responsible refrigerant practices are important to the environment, our customers, and the air conditioning industry. All technicians who handle refrigerants must be certified according to local rules. For the USA, the Federal Clean Air Act (Section 608) sets forth the requirements for handling, reclaiming, recovering and recycling of certain refrigerants and the equipment that is used in these service procedures. In addition, some states or municipalities may have additional requirements that must also be adhered to for responsible management of refrigerants. Know the applicable laws and follow them.

2

#### **WARNING**

#### Proper Field Wiring and Grounding Required!

Failure to follow code could result in death or serious injury. All field wiring MUST be performed by qualified personnel. Improperly installed and grounded field wiring poses FIRE and ELECTROCUTION hazards. To avoid these hazards, you MUST follow requirements for field wiring installation and grounding as described in NEC and your local/state/national electrical codes.

#### **WARNING**

#### Personal Protective Equipment (PPE) Required!

Failure to wear proper PPE for the job being undertaken could result in death or serious injury. Technicians, in order to protect themselves from potential electrical, mechanical, and chemical hazards, MUST follow precautions in this manual and on the tags, stickers, and labels, as well as the instructions below:

- Before installing/servicing this unit, technicians MUST put on all PPE required for the work being undertaken (Examples; cut resistant gloves/sleeves, butyl gloves, safety glasses, hard hat/bump cap, fall protection, electrical PPE and arc flash clothing). ALWAYS refer to appropriate Safety Data Sheets (SDS) and OSHA guidelines for proper PPE.
- When working with or around hazardous chemicals, ALWAYS refer to the appropriate SDS and OSHA/GHS (Global Harmonized System of Classification and Labeling of Chemicals) guidelines for information on allowable personal exposure levels, proper respiratory protection and handling instructions.
- If there is a risk of energized electrical contact, arc, or flash, technicians MUST put on all PPE in accordance with OSHA, NFPA 70E, or other country-specific requirements for arc flash protection, PRIOR to servicing the unit. NEVER PERFORM ANY SWITCHING, DISCONNECTING, OR VOLTAGE TESTING WITHOUT PROPER ELECTRICAL PPE AND ARC FLASH CLOTHING. ENSURE ELECTRICAL METERS AND EQUIPMENT ARE PROPERLY RATED FOR INTENDED VOLTAGE.

3

#### **WARNING**

#### Follow EHS Policies!

Failure to follow instructions below could result in death or serious injury.

- All Trane personnel must follow the company's Environmental, Health and Safety (EHS) policies when performing work such as hot work, electrical, fall protection, lockout/tagout, refrigerant handling, etc. Where local regulations are more stringent than these policies, those regulations supersede these policies.
- Non-Trane personnel should always follow local regulations.

### Copyright

This document and the information in it are the property of Trane, and may not be used or reproduced in whole or in part without written permission. Trane reserves the right to revise this publication at any time, and to make changes to its content without obligation to notify any person of such revision or change.

### Trademarks

All trademarks referenced in this document are the trademarks of their respective owners.

### Revision History

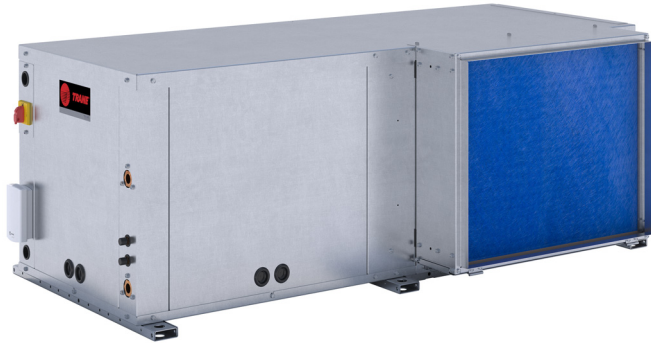
Updated Horizontal and Vertical units sections in the Installation Chapter.

4

## Installation

### Horizontal Units (Bottom Access Only)

**Figure 1.** Right return, back supply ducted filter rack



**Note:** Filter rack shown is accessible from bottom of the unit.

1. Remove the existing filter rack rail from the unit, and re-use the screws to attach the filter rack to the unit.
2. Filter racks are to be installed on the side of the unit. Slide top flange over the top of cabinet and bottom flange below the bottom of the cabinet.
3. Line the top/bottom holes with the filter rack top and bottom slots; refer to [Figure 1](#).
4. Attach filter rack to cabinet using # 10-16 x 3/8 in. screws. These screws are provided with the unit, three on top and two on bottom.
5. Slide the filter provided with the unit into the filter rack (through the guide rails).

**Note:** All horizontal units ship with a filter. This same filter can be utilized in the ducted filter rack.

6

4. Attach filter rack to cabinet using # 10-16 x 3/8 in. screws provided with the unit, three on top and two on bottom.
5. Slide the filter provided with the unit into the filter rack (through the guide rails).

**Note:** All vertical units ship with a filter. This same filter can be utilized in the ducted filter rack.

6. Close the filter rack access door and make sure the door magnet latches the door shut. This will prevent air from bypassing the filter and getting into the unit.
7. Once the filter rack is installed, seal the filter rack to the unit with duct tape or apply caulk. This will cover any gaps or notches (to clear screw heads).

5

6. Close the filter rack access door and make sure the door magnet latches the door shut. This will prevent air from bypassing the filter and getting into the unit.
7. Once the filter rack is installed, seal the filter rack to the unit with duct tape or apply caulk. This will cover any gaps or notches (to clear screw heads).

### Vertical Units (Side Access Only)

**Figure 2.** Right return, top supply ducted filter rack



**Note:** Filter rack shown is accessible from front of unit (left hand access).

1. Remove the existing filter rack rails from the unit and re-use the screws to attach the filter rack to the unit. See [Figure 2](#).
2. Filter racks are to be installed on side of unit. Slide top flange over the top of cabinet and bottom flange on the face of the cabinet.
3. Line the top/bottom holes with the filter rack top and bottom slots; refer to [Figure 2](#).

Trane - by Trane Technologies (NYSE: TT), a global climate innovator - creates comfortable, energy efficient indoor environments for commercial and residential applications. For more information, please visit [trane.com](http://trane.com) or [tranetechnologies.com](http://tranetechnologies.com).

Trane has a policy of continuous product and product data improvement and reserves the right to change design and specifications without notice. We are committed to using environmentally conscious print practices.