



## Start-Up Instructions

# Trane Rental Services RTAC Start-Up Instructions

July 2020

SRV-SVN011C-EN

© 2020 Trane



## 1 Warnings, Cautions, and Notices

Read this manual thoroughly before operating or servicing this unit. Safety advisories appear throughout this manual as required. Your personal safety and the proper operation of this machine depend upon the strict observance of these precautions.

The three types of advisories are defined as follows:

- WARNING** Indicates a potentially hazardous situation which, if not avoided, could result in death or serious injury.
- CAUTION** Indicates a potentially hazardous situation which, if not avoided, could result in minor or moderate injury. It could also be used to alert against unsafe equipment or property-damage only accidents.
- NOTICE** Indicates a situation that could result in equipment or property-damage only accidents.

### Important Environmental Concerns

Scientific research has shown that certain man-made chemicals can affect the earth's naturally occurring stratospheric ozone layer when released to the atmosphere. In particular, several of the identified chemicals that may affect the ozone layer are refrigerants that contain Chlorine, Fluorine and Carbon (CFCs) and those containing Hydrogen, Chlorine, Fluorine and Carbon (HCFCs). Not all refrigerants containing these compounds have the same potential impact to the environment. Trane advocates the responsible handling of all refrigerants-including industry replacements for CFCs such as HCFCs and HFCs.

### Important Responsible Refrigerant Practices

Trane believes that responsible refrigerant practices are important to the environment, our customers, and the air conditioning industry. All technicians who handle refrigerants must be certified according to local rules. For the USA, the Federal Clean Air Act (Section 608) sets forth the requirements for handling, reclaiming, recovering and recycling of certain refrigerants and the equipment that is used in these service procedures. In addition, some states or municipalities may have additional requirements that must also be adhered to for responsible management of refrigerants. Know the applicable laws and follow them.

## 2 WARNING

**Proper Field Wiring and Grounding Required!**  
Failure to follow code could result in death or serious injury. All field wiring MUST be performed by qualified personnel. Improperly installed and grounded field wiring poses FIRE and ELECTROCUTION hazards. To avoid these hazards, you MUST follow requirements for field wiring installation and grounding as described in NEC and your local/state electrical codes.

**Personal Protective Equipment Required!**  
Installing/servicing this unit could result in exposure to electrical, mechanical and chemical hazards. Before installing/servicing this unit, technicians MUST put on all Personal Protective Equipment (PPE) recommended for the work being undertaken. ALWAYS refer to appropriate SDS sheets and OSHA guidelines for proper PPE. When working with or around hazardous chemicals, ALWAYS refer to the appropriate SDS sheets and OSHA guidelines for information on allowable personal exposure levels, proper respiratory protection and handling recommendations. If there is a risk of arc or flash, technicians MUST put on all necessary Personal Protective Equipment (PPE) in accordance with NFPA70E for arc/flash protection PRIOR to servicing the unit. Failure to follow recommendations could result in death or serious injury.

**Follow EHS Policies!**  
Failure to follow instructions below could result in death or serious injury.

- All Trane personnel must follow the company's Environmental, Health and Safety (EHS) policies when performing work such as hot work, electrical, fall protection, lockout/tagout, refrigerant handling, etc. Where local regulations are more stringent than these policies, those regulations supersede these policies.
- Non-Trane personnel should always follow local regulations.

## 3 System Requirements and Specifications

These start up instructions are provided as a convenience only. Review all safety and warning labels prior to start up. Consult the operations manual if you have any questions.

- a. Connect 115-110/60/1 voltage supply to Shore Power receptacle 24 hrs. prior to starting the chiller to energize oil heater and boil refrigerant out of the oil.



- b. Make sure entire chiller is within 1/4 in. of being level. Leveling jacks shall be used to assist with the unit leveling process.



**SAFETY WARNING**  
Only qualified personnel should install and service the equipment. The installation, starting up, and servicing of heating, ventilating, and air-conditioning equipment can be hazardous and requires specific knowledge and training. Improperly installed, adjusted or altered equipment by an unqualified person could result in death or serious injury. When working on the equipment, observe all precautions in the literature and on the tags, stickers, and labels that are attached to the equipment.

- 4 c. Proceed to connect water pipe/hose to both Inlet and Outlet on Chiller. Make sure to close strainer valves (located inside the chiller)



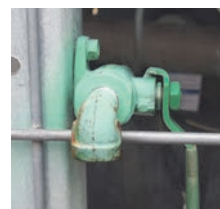
- d. Connect 'garden' hose to drain pipe; open drain valve and turn on water supply to start filling chiller loop.



- e. As the system is being filled, OPEN purge/vent valve(s). Handle should be horizontal (parallel) in the same direction as pipe when in the open position. See picture below.



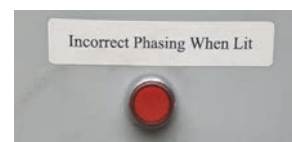
- 5 f. Once system is purged (no air in the system) water flow coming out of the purge/vent valve should be a constant stream. Then close purge drain valve(s). The handle should be perpendicular (90 degrees) to horizontal piping while in the closed position. Same as in the picture below.



- g. Open main building valves (picture not shown)
- h. Proceed to connect and tighten voltage supply cables matching appropriated color wiring (BLK-BLK, R-R, B-B, G-G). Make sure to twist Cam-Lock ends for secure connection.



- i. Make sure the phase indicator light is working by pushing the red button to see if light turns on. If the light is ON after the disconnect switch is in the "On" position, then the unit's voltage supply is not in the correct phase and the chiller should not be turned on.



- 6 j. Move disconnect switch to "On" Position



- k. If using the chiller's integral pump: Set Pump in "Auto" mode



- 7 l. At the CH530 controller change desired setpoint: "Main" Tab → "Active Chilled Water Setpoint" → Press "Auto" to start Chiller



**Please call Trane Rental Services at 1-800-755-5115 for technical support.**

Trane - by Trane Technologies (NYSE: TT), a global climate innovator - creates comfortable, energy efficient indoor environments for commercial and residential applications. For more information, please visit [trane.com](http://trane.com) or [tranetechnologies.com](http://tranetechnologies.com).

Trane has a policy of continuous product and product data improvement and reserves the right to change design and specifications without notice. We are committed to using environmentally conscious print practices.