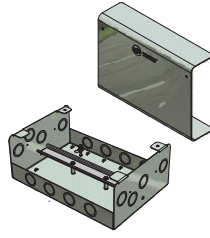




Installation Instructions

Non-powered Enclosure for DIN-mounted Tracer® Controllers

Order Number: X19091354010



Packaged Contents

- One (1) enclosure
- Two (2) #10 [5 mm] screws with anchors

Model Numbers

Before installing the controller, verify the correct model for local power requirements. The model number is on the shipping label or on the product label inside the enclosure.

X39641209-01

SAFETY WARNING

Only qualified personnel should install and service the equipment. The installation, starting up, and servicing of heating, ventilating, and air-conditioning equipment can be hazardous and requires specific knowledge and training. Improperly installed, adjusted or altered equipment by an unqualified person could result in death or serious injury. When working on the equipment, observe all precautions in the literature and on the tags, stickers, and labels that are attached to the equipment.

June 2020

BAS-SVN094D-EN



© 2020 Trane

1

Warnings, Cautions, and Notices

Read this manual thoroughly before operating or servicing this unit. Safety advisories appear throughout this manual as required. Your personal safety and the proper operation of this machine depend upon the strict observance of these precautions.

The three types of advisories are defined as follows:

WARNING

Indicates a potentially hazardous situation which, if not avoided, could result in death or serious injury.

CAUTION

Indicates a potentially hazardous situation which, if not avoided, could result in minor or moderate injury. It could also be used to alert

NOTICE

Indicates a situation that could result in equipment or property-damage only accidents.

Shipment

Visually inspect all parts for obvious defects or damage. All components have been thoroughly inspected before leaving the factory. Any claims for damage incurred during shipment should be filed immediately with the carrier.

2

CAUTION

Use the equipment only as specified!
The use of the enclosure in a manner not specified in this document may impair the protection provided by the enclosure.

NOTICE

Avoid Equipment Damage!
Install and use the controllers as specified by the manufacturer. Failure to do so could result in equipment damage.

DIN Unit Width

The following table provides DIN unit width measurements for Trane devices.

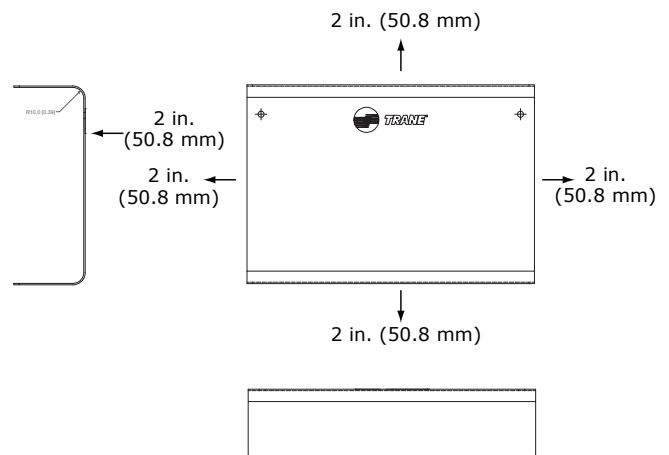
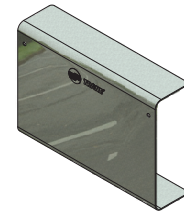
Table 1. DIN unit width measurements

Device	Device Width (mm/in)	DIN Unit Width (1 unit = 18 mm)
Tracer UC400 controller	143.6 mm/5.6 in	8
Tracer UC600 controller	215.5 mm/8.5 in	12
Tracer XM30 expansion module	53.6 mm/2.1 in	3
Tracer XM32 expansion module	71.6 mm/2.8 in	4
Tracer XM70 expansion module	215.9 mm/8.5 in	12
Tracer BACnet terminator	35.6 mm/1.4 in	2

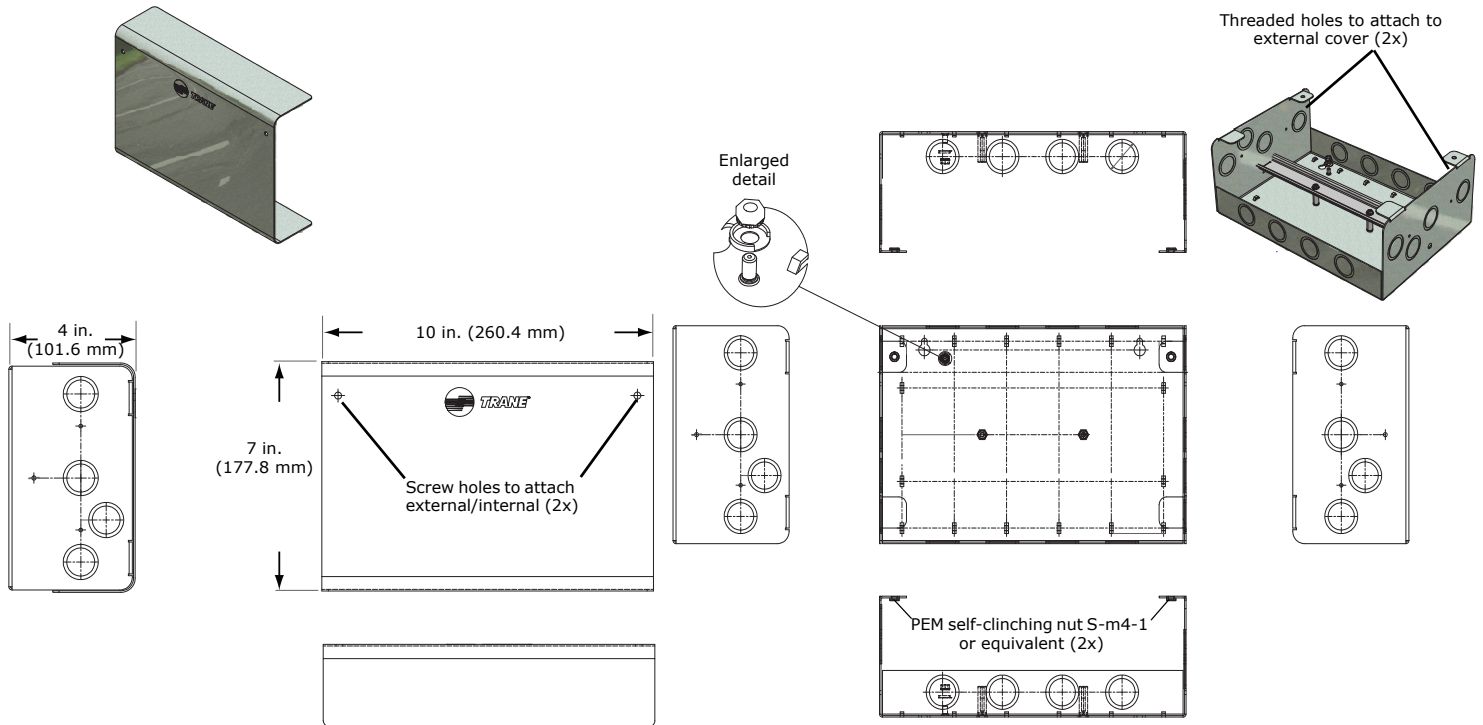
3

External Enclosure Clearances and Dimensions

Note: Ensure that the selected location provides adequate space for the minimum clearances.



External/Internal Enclosure Dimensions



Mounting

Prior to mounting, ensure that the location meets the clearance requirements described in Panel 3. Trane recommends locating the controller:

- Near the controlled equipment to reduce wiring
- Where service personnel have easy access
- Where public access is restricted to minimize the possibility of tampering or vandalism

To mount the enclosure:

1. Using the enclosure as a template, mark the location of the two mounting holes on the mounting surface.
2. Set aside the enclosure and drill two holes for the screws at the marked locations.

Note: Drill holes for #10 (5 mm) screws or #10 wall anchors. Use wall anchors if the mounting surface is dry wall or masonry.

3. Secure the enclosure to the mounting surface with the enclosed #10 (5 mm) screws or #10 wall anchors.

Installing the Enclosure Cover

To install the enclosure cover:

1. Place the cover over the base and ensure to line up the two screw holes.
2. Install the two screws and do not overtighten the screws.

Trane - by Trane Technologies (NYSE: TT), a global climate innovator - creates comfortable, energy efficient indoor environments for commercial and residential applications. For more information, please visit trane.com or tranetechnologies.com.

Trane has a policy of continuous product and product data improvement and reserves the right to change design and specifications without notice. We are committed to using environmentally conscious print practices.